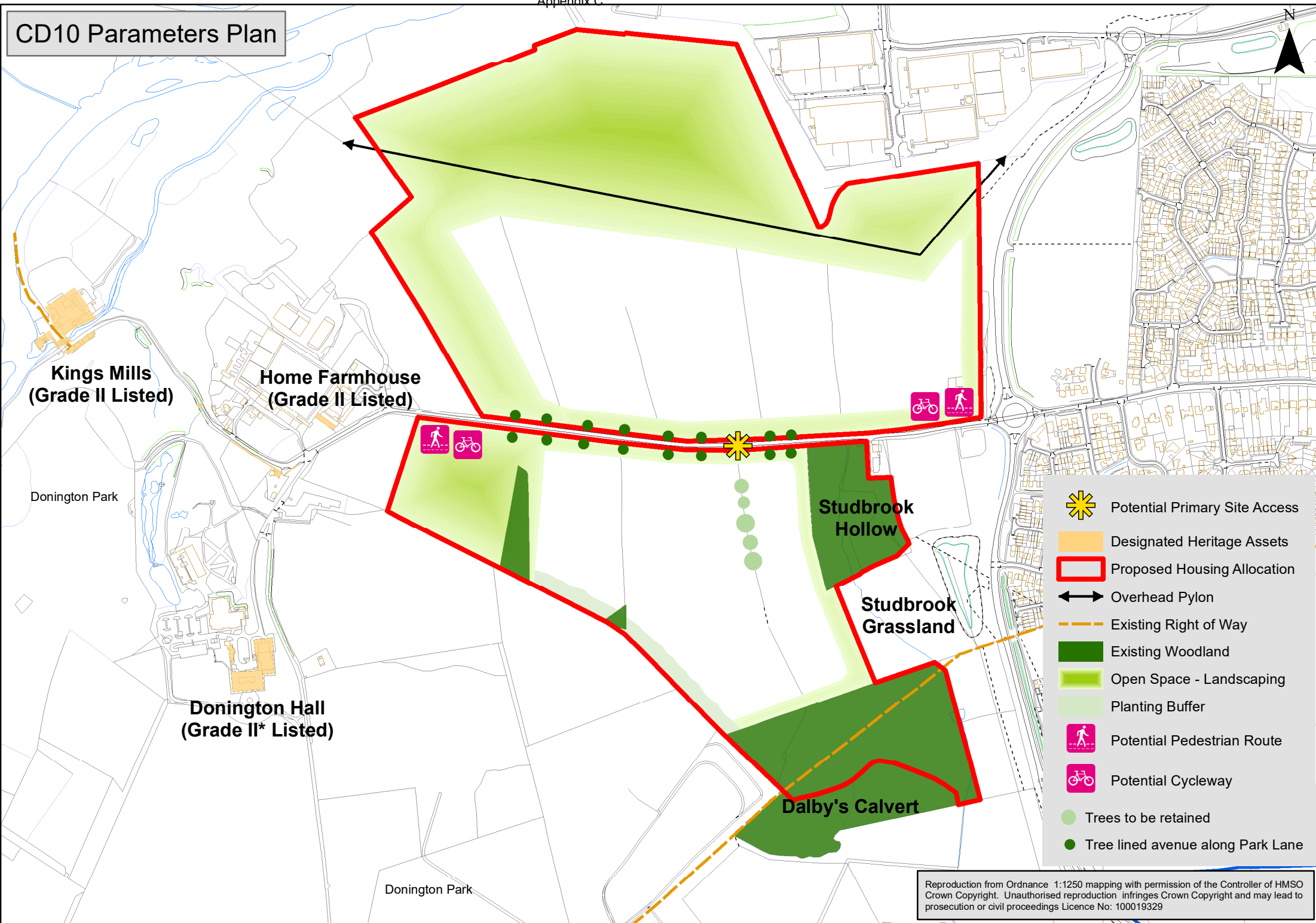


CD10 Parameters Plan



- Potential Primary Site Access
- Designated Heritage Assets
- Proposed Housing Allocation
- Overhead Pylon
- Existing Right of Way
- Existing Woodland
- Open Space - Landscaping
- Planting Buffer
- Potential Pedestrian Route
- Potential Cycleway
- Trees to be retained
- Tree lined avenue along Park Lane